



Reg. No. :

Name :

Third Semester B.Tech. Degree Examination, September 2014

(2008 Scheme)

(Special Supplementary)

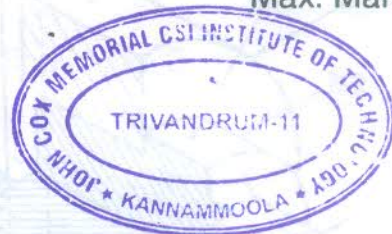
08.306 : ENGINEERING DRAWING (MPU)

Time : 4 Hours

Max. Marks : 100

PART – A

Machine Drawing



Time : 2 Hours

Max. Marks : 50

Answer **any 2** sub questions.

(2×10=20 Marks)

1. Sketch the following and indicate standard propositions on the drawing.
 - i) Rag foundation bolt.
 - ii) Lewis foundation bolt.
 - iii) Two views of a double riveted lap joint.



2. An isometric view of a socket and spigot joint is shown in Figure A-Q2. Draw the following views.

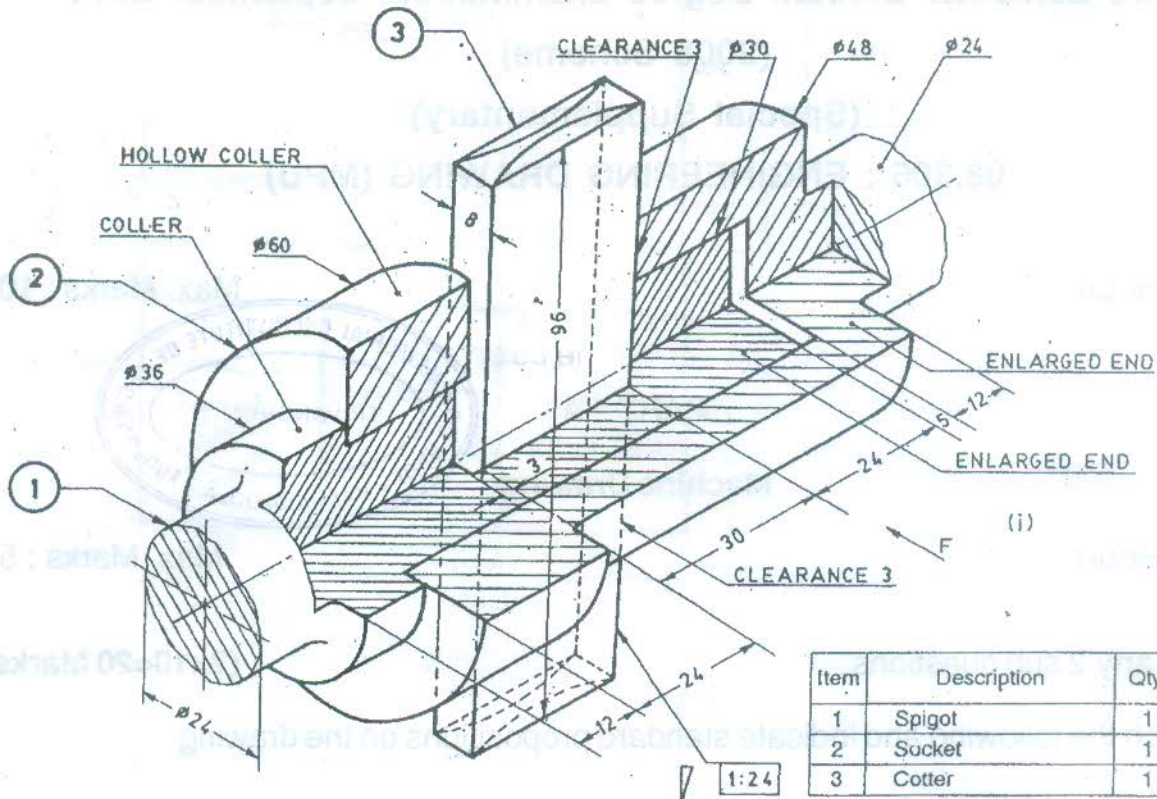
- I) Bottom half sectioned elevation front view – bottom half in section.
- II) End view from left.
- III) Top view.

20

5

5

30



ITEM LIST

Item	Description	Qty.	Material
1	Spigot	1	M. S.
2	Socket	1	M. S.
3	Cotter	1	M. S.

Fig. A-Q2

PART – B

Civil Engg. Drawing and Estimation

Time : 2 Hours

Max. Marks : 50

PART – I

Answer **any one** question. Assume **any** missing data **suitably**.

1. Draw to a suitable scale the plan, section AA and front view of a building shown in Fig. 1. Specification : Foundation : P.C.C. 1 : 4 : 8 80 cm wide and 15 cm thick, random ruffle masonry of size 60 cm x 70 cm. Basement : R – R masonry of size 40 x 45 cm. Superstructure : Brick work in c.m. 1 : 6, 20 cm thick with 12 cm thick lintel over openings. Roof R.C.C. of 10 cm thick. Headroom 3 m.

30

OR



2. Draw to a suitable scale the plan, section AA, and front elevation of a building shown in Fig. 2.

Specification : Foundation : P.C.C. 1 : 4 : 8 100 cm x 15 cm

R.R. Masonry 70 x 60 cm

Basement : R.R. Masonry in C.M. 1 : 8, 50 x 60 cm

Superstructure : Brick work in C.M. 1 : 6, 30 cm thick and minimum height of 3.5 m.

R.C.C. lintel of 20 cm thick over openings.

Roof A.C. sheet roof over steel truss.



PART - II

Answer any one question. Assume any missing data suitably.

3. Find the quantities of the following items from the building in Fig. 1

a) P.C.C. 1 : 4 : 8 for foundation

b) Brick work for wall.

20

OR

4. Find the quantities of the following item from the building in Fig. 2

a) Earth work excavation for foundation

b) R.R. masonry for foundation and basement.

20

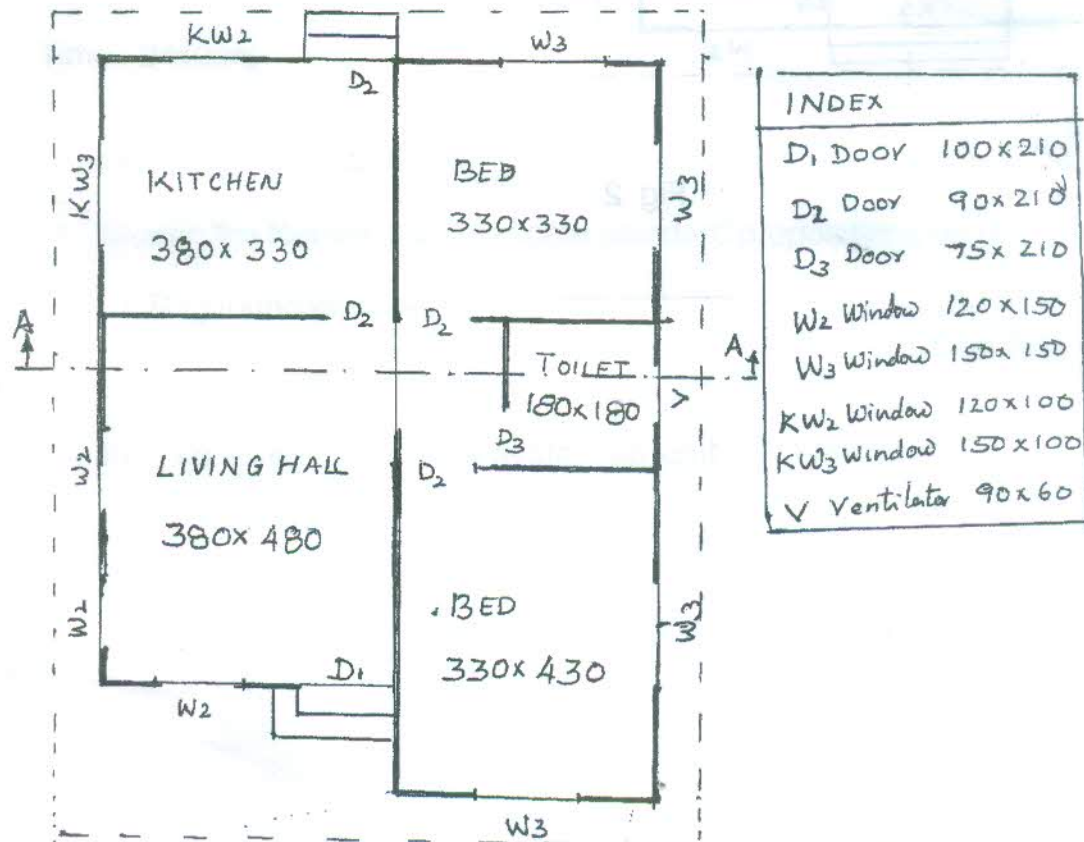
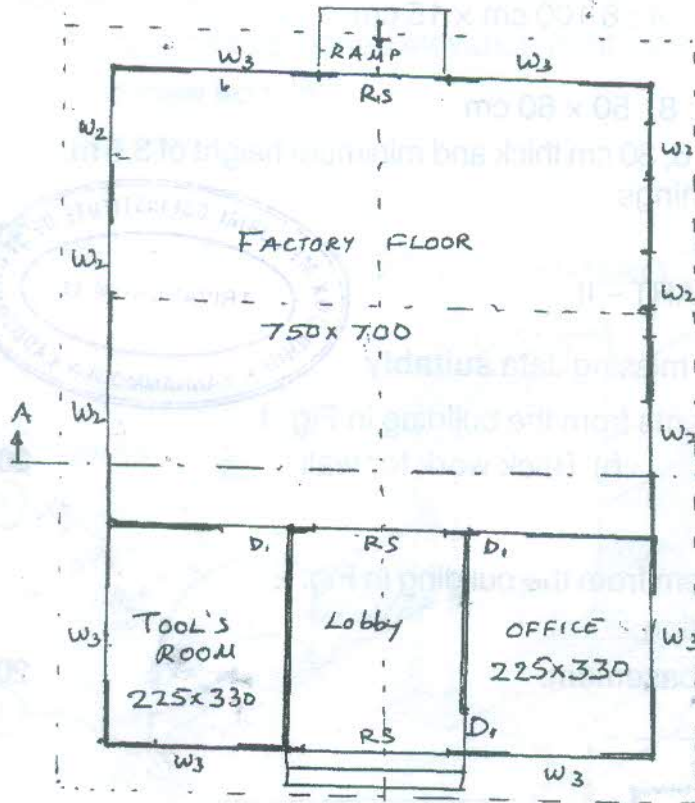


Fig.1



INDEX		
RS	Rolling shutter	240x270
D ₁	Door	110x210
W ₃	Window	180x180
W ₂	Window	120x180

Fig. 2